

# HGSY - Safety Yellow Gripper

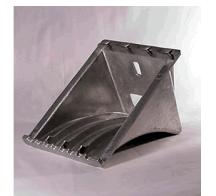
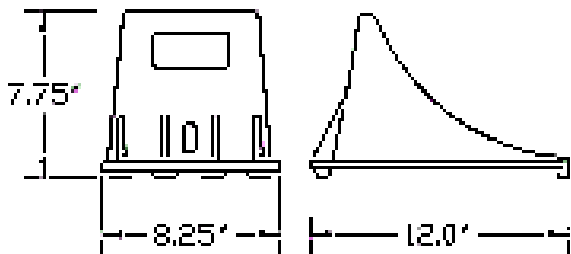
*High adhesion, high capacity, & high visibility*

**HGS stay in place.** Heel-to-toe length allows for a steeper line of force between axle and rear teeth, and therefore an enhanced coefficient of friction.

**HGS are easy to use.** Hand-grab opening allows for fast placement and retrieval. Flanged base allows a full range of bracket options.

**HGS are strong.** Compact structural design allows a test-to-failure well above maximum tire forces.

- Aluminum / yellow paint
- 7.75"H x 8.25"W x 12"L
- 4.9 lbs.



Featuring tough, high-vis, stanley-yellow powder coating.

## MATERIAL SAFETY DATA SHEET

<b>LARGE TIRE SIZE</b>	Propane, utility, and fire trucks. Loading docks. Trailers.
<b>% GRADE RATING</b>	Effective single limit 16% (32% grade paired) [STATIC]
<b>STANDARDS MET</b>	SAE J348, NFPA 1901 (2003), DOT Park Brake ( use in pairs )

